

# HOLSTEIN FUN IN THE WEST | PASO ROBLES EDITION

Friday, February 24, 2017 • 1PM (PST) • Paso Robles, CA

Don't Miss Out!! Wine trails & tours! Golfing! Beaches! Thermal springs!  
World-class restaurants!



**Featuring genomic leaders with potential to return hundreds of thousands to their new owners, plus show-age prospects backed by All-American & All-Canadian dams! The very elite of the Holstein breed will be offered!**



**SULLY NUMERO UNO MADGE-ET**

(VG-85 VG-MS DOM, 2y)  
2-03 3x 365d 28,927 4.2 1217 3.4 981  
*Her 10/16 Modesty gr'dtr sells, +2831 GTPI, +929NM +7.6PL 2184M +86F +71P +2.62T +1.80FLC +2.28UDC.*  
Dam by Montross, +2606 GTPI & +3206 GLPI.  
Terra Linda Dairy, 559-358-5345



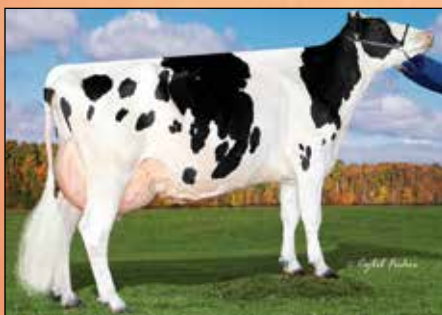
**LARCREST CANTO-ET** (VG-88, DOM)

*Selling are her 2 fancy gr'dtrs.; a 9/16 Modesty +2829 GTPI +1485M +94F +60P +\$900NM +2.1DPR +2.87T +2.39UDC +2.06FLC & a 11/16 Jedi +2773 GTPI +1399M +80F +70P +\$821NM +2.54T +2.10UDC.* Dam of heifers by Powerball & 3rd dam VG-89 EX-MS DOM Cale x 6 more VG or EX dams!  
IHG & Maverick +61499 949 292



**THURLER COMMANDER CHANTAL**

The former #1 GLPI Heifer. *Selling is her 8/16 Jett dtr., +2826 GTPI, +1667M +93F +68P +2.1DPR +2.15T +2.21UDC +2.09FLC +912NM.* Next dams GP-83 Super-sire x 4 more VG/EX dams.  
Westcoast Holsteins, 604-799-6376



**CLEAR-ECHO SHAMROCK 2519-ET** (EX-91 DOM)

3-09 3x 365d 47,950 3.9 1863 3.0 1428  
*Selling is a choice of her 2 flush age Modesty gr'dtrs. 1 born 3/16, +2833 GTPI, +2062M +86F +56P +946NM +8.4PL +3.2DPR +2.43T, donor dam or 1 born 5/16, +2830 GTPI, +2106M +88F +68P +2.52T.* Dam GP-83, 2y Montross x 5 more VG/EX.  
Clear Echo, 518-669-4468



**FREUREHAVEN FGS LUCY-ET** (VG-86, 2y 2\*)

4-10 2x 186d 23,289 3.5% 822 3.0% 699 (Inc)  
*Selling is a 9/16 Modesty, +2820 GTPI, +1310M +77F +57P +931NM +8.1PL +4.1DPR.* Dam by Racer, +2503 GTPI x VG-87, 2y Uno x 8 more VG/EX from the Laurie Sheik Family.  
Fairmont Farm, Inc., 802-223-3868.



**WELCOME MIDNIGHT WYN-ET** (GP-83 VG-MS, 2y)

1-11 266d 23,817 4.2 999 3.0 720 (Inc)  
*Selling is her flush age, +2812 GTPI Jedi dtr. +2057M +74F +75P +931NM +3.5DPR +9.0PL.* Next dam EX-91 EX-MS Freddie x 8 more VG/EX dams.  
Welcome Stock Farm, 518-424-6770

**SALE HEADQUARTERS:**

Paso Robles Inn  
1103 Spring St., Paso Robles, CA 93446  
For reservations please call 1-800-676-1713, mention the Cattle Exchange.  
It is recommended that you make reservations prior to 1-25-17

View & Bid online in Real Time at [www.cowbuyer.com](http://www.cowbuyer.com)  
Bidders must be pre-approved.



Contact Aaron Ray Thompkins if you need assistance at 336-363-4639

**SALE MANAGED BY:**

**The CATTLE EXCHANGE**  
Dave & Merry Rama • 4236 Co. Hwy. 18, Delhi, NY 13753  
Ph: 607/746-2226 • Cell: 607-435-0792  
email: [daveramas@cattleexchange.com](mailto:daveramas@cattleexchange.com) • [www.cattleexchange.com](http://www.cattleexchange.com)

For more information on this sale please contact:

Dave Rama, 607-435-0792 | Rick VerBeek, 614-580-8662 | Scott Culbertson, 507-923-1881